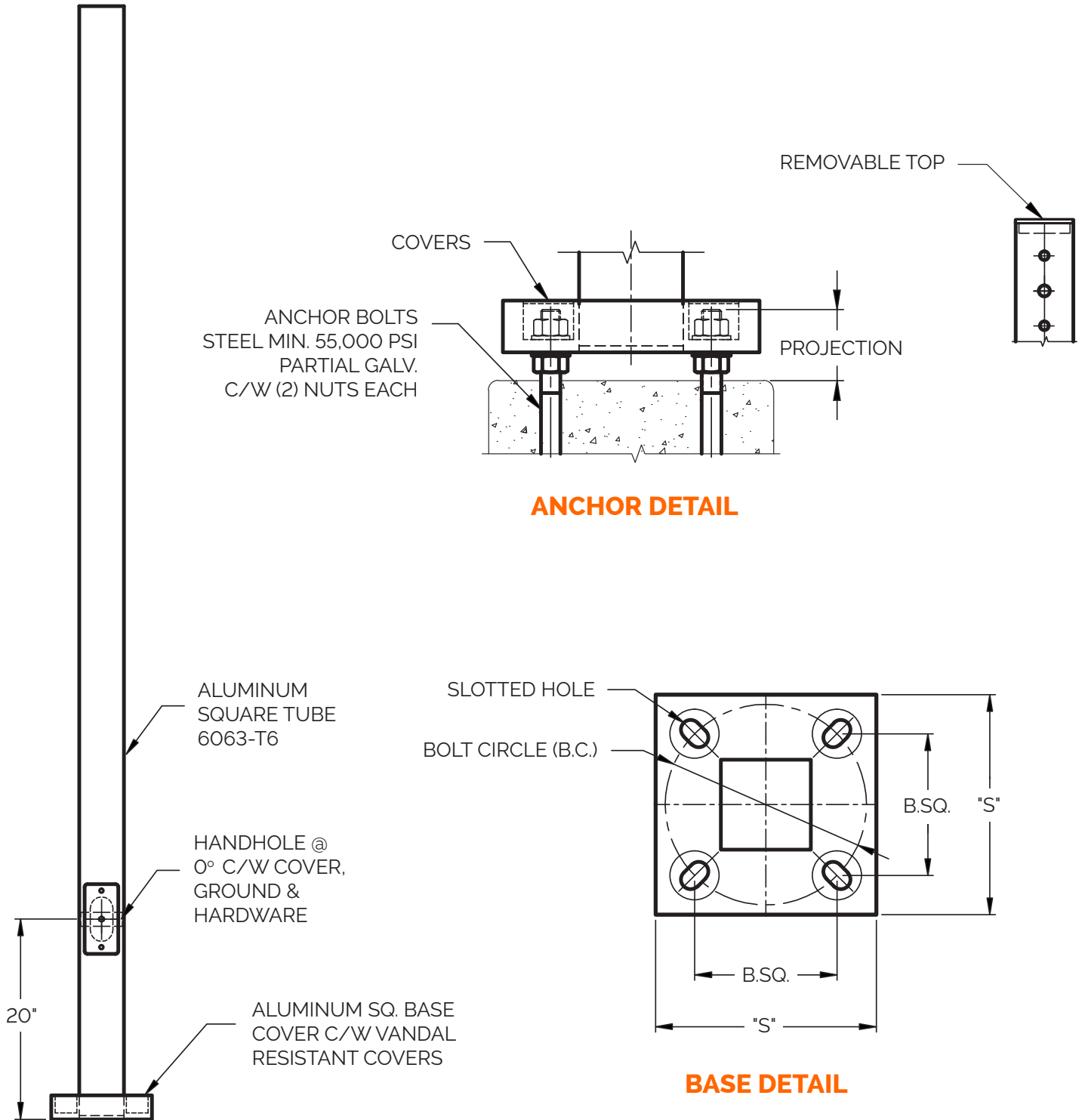




# Square Straight Aluminum Pole





# Square Straight Aluminum Pole

<b>CATALOGUE #</b>		<b>FIXTURE INFO</b>
<b>PROJECT NAME</b>		
<b>CITY</b>		
<b>PREPARED BY</b>	<b>DATE</b>	
<b>COMMENTS</b>		
		<b>QUANTITY</b>
		<b>EPA (sq.ft.)</b>
		<b>WEIGHT (lbs)</b>

Catalogue #	Pole Size (in)	Pole Ht. (ft)	Pole Wt. (lbs)	Pole Type	B.C. (B.SQ.)	Base SQ. (S)	Anchor Bolt Size	Proj.	Handhole Size	Maximum EPA (sq.ft.)			
										80MPH	90MPH	100MPH	110MPH
SSA408LD	4	8	24	LD	9" (6.37")	10"	3/4" x 24"	3"	2" x 4"	18.2	14.0	10.9	8.7
SSA410LD	4	10	28	LD	9" (6.37")	10"	3/4" x 24"	3"	2" x 4"	13.9	10.5	8.0	6.2
SSA412LD	4	12	33	LD	9" (6.37")	10"	3/4" x 24"	3"	2" x 4"	10.6	7.7	5.7	4.2
SSA414LD	4	14	37	LD	9" (6.37")	10"	3/4" x 24"	3"	2" x 4"	8.3	5.8	4.1	2.8
SSA415LD	4	15	39	LD	9" (6.37")	10"	3/4" x 24"	3"	2" x 4"	5.7	3.8	2.6	1.6
SSA416LD	4	16	42	LD	9" (6.37")	10"	3/4" x 24"	3"	2" x 4"	4.8	3.1	1.9	1.0
SSA416MD	4	16	59	MD	9" (6.37")	10"	3/4" x 24"	3"	2" x 4"	8.6	6.1	4.3	3.0
SSA418LD	4	18	46	LD	9" (6.37")	10"	3/4" x 24"	3"	2" x 4"	3.6	2.1	-	-
SSA418MD	4	18	66	MD	9" (6.37")	10"	3/4" x 24"	3"	2" x 4"	6.8	4.6	3.0	1.8
SSA518MD	5	18	85	MD	11" (7.75")	11.25"	3/4" x 24"	3"	3" x 5"	12.7	9.0	6.4	4.4
SSA420LD	4	20	51	LD	9" (6.37")	10"	3/4" x 24"	3"	2" x 4"	2.1	-	-	-
SSA420MD	4	20	73	MD	9" (6.37")	10"	3/4" x 24"	3"	2" x 4"	5.2	3.1	1.7	-
SSA520MD	5	20	93	MD	11" (7.75")	11.25"	3/4" x 24"	3"	3" x 5"	10.5	7.1	4.7	2.9
SSA620MD	6	20	114	MD	12.5" (8.81")	12.75"	1" x 36"	3.75"	3" x 5"	17.4	12.3	8.7	6.0
SSA620HD	6	20	148	HD	12.5" (8.81")	12.75"	1" x 36"	3.75"	3" x 5"	24.3	17.8	13.2	9.7
SSA525MD	5	25	115	MD	11" (7.75")	12.75"	3/4" x 24"	3"	3" x 5"	5.6	3.0	2.0	-
SSA625MD	6	25	139	MD	12.5" (8.81")	12.75"	1" x 36"	3.75"	3" x 5"	10.1	6.1	3.3	1.3
SSA625HD	6	25	182	HD	12.5" (8.81")	12.75"	1" x 36"	3.75"	3" x 5"	15.8	10.7	7.0	4.3
SSA630HD	6	30	216	HD	12.5" (8.81")	12.75"	1" x 36"	3.75"	3" x 5"	8.6	4.8	2.0	-
SSA632HD	6	32	229	HD	12.5" (8.81")	12.75"	1" x 36"	3.75"	3" x 5"	6.9	3.2	-	-
SSA635HD	6	35	250	HD	12.5" (8.81")	12.75"	1" x 36"	3.75"	3" x 5"	4.2	-	-	-

## Order Entry Info

POLE SPECS	MOUNTING TYPE (See Note 1)	FINISH TYPE	PC COLOUR	OPTIONS
4" 8' (LD)	<b>TOP TENON MOUNT</b> <b>TT2</b> - 2 3/8" x 4" tenon <b>TT3</b> - 2 7/8" x 4" tenon	<b>PC</b> - Powder Coated  <i>For Powder Coated, please select Colour from next column</i>	<b>BLK</b> - Black  <b>BZ</b> - Bronze  <b>BR</b> - Brushed  <b>CC</b> - Custom Colour (RAL- ) <i>(Additional charges may apply)</i>  <b>N</b> - None	<input type="checkbox"/> <b>DUPR</b> - 1110 Box Provision (Festoon Box) <input type="checkbox"/> <b>DUPR GFI</b> - 1110 Box Provision c/w 15A 120V GFI Receptacle and Weatherproof Cover  <input type="checkbox"/> <b>BCP</b> - Type 4 Plastic Base Cover <input type="checkbox"/> <b>BCCS</b> - Type 4 Cast Square Base Cover <input type="checkbox"/> <b>HHSS</b> - Hand Hole Security System <input type="checkbox"/> <b>FBA1</b> - Flower Basket Arm One Side (See Note 2) <input type="checkbox"/> <b>FBA2</b> - Flower Basket Arm Dual (See Note 2) <input type="checkbox"/> <b>BA1</b> - Banner Arms One Side (See Note 3) <input type="checkbox"/> <b>BA2</b> - Banner Arms Dual (See Note 3) <input type="checkbox"/> <b>AB</b> - Anchor Bolts <input type="checkbox"/> <b>BH</b> - Bullhorns <input type="checkbox"/> <b>N</b> - None
4" 10' (LD)				
4" 12' (LD)				
4" 14' (LD)				
4" 15' (LD)	<b>SIDE TENON MOUNT</b> <i>Dimensions: 2 3/8" dia. x 5" long</i> <b>ST1</b> - Single Head <b>ST2</b> - 2 Heads at 90° <b>ST2B</b> - 2 Heads at 180° <b>ST3</b> - 3 Heads at 90° <b>ST4</b> - 4 Heads at 90°	<i>For Powder Coated, please select Colour from next column</i>	<b>BLK</b> - Black  <b>BZ</b> - Bronze  <b>BR</b> - Brushed  <b>CC</b> - Custom Colour (RAL- ) <i>(Additional charges may apply)</i>  <b>N</b> - None	<input type="checkbox"/> <b>DUPR</b> - 1110 Box Provision (Festoon Box) <input type="checkbox"/> <b>DUPR GFI</b> - 1110 Box Provision c/w 15A 120V GFI Receptacle and Weatherproof Cover  <input type="checkbox"/> <b>BCP</b> - Type 4 Plastic Base Cover <input type="checkbox"/> <b>BCCS</b> - Type 4 Cast Square Base Cover <input type="checkbox"/> <b>HHSS</b> - Hand Hole Security System <input type="checkbox"/> <b>FBA1</b> - Flower Basket Arm One Side (See Note 2) <input type="checkbox"/> <b>FBA2</b> - Flower Basket Arm Dual (See Note 2) <input type="checkbox"/> <b>BA1</b> - Banner Arms One Side (See Note 3) <input type="checkbox"/> <b>BA2</b> - Banner Arms Dual (See Note 3) <input type="checkbox"/> <b>AB</b> - Anchor Bolts <input type="checkbox"/> <b>BH</b> - Bullhorns <input type="checkbox"/> <b>N</b> - None
4" 16' (LD)				
4" 16' (MD)				
4" 18' (LD)				
4" 18' (MD)	<b>DRILL PATTERN</b> <b>DP1</b> - Single Head <b>DP2</b> - 2 Heads at 90° <b>DP2B</b> - 2 Heads at 180° <b>DP3</b> - 3 Heads at 90° <b>DP4</b> - 4 Heads at 90°	<i>For Powder Coated, please select Colour from next column</i>	<b>BLK</b> - Black  <b>BZ</b> - Bronze  <b>BR</b> - Brushed  <b>CC</b> - Custom Colour (RAL- ) <i>(Additional charges may apply)</i>  <b>N</b> - None	<input type="checkbox"/> <b>DUPR</b> - 1110 Box Provision (Festoon Box) <input type="checkbox"/> <b>DUPR GFI</b> - 1110 Box Provision c/w 15A 120V GFI Receptacle and Weatherproof Cover  <input type="checkbox"/> <b>BCP</b> - Type 4 Plastic Base Cover <input type="checkbox"/> <b>BCCS</b> - Type 4 Cast Square Base Cover <input type="checkbox"/> <b>HHSS</b> - Hand Hole Security System <input type="checkbox"/> <b>FBA1</b> - Flower Basket Arm One Side (See Note 2) <input type="checkbox"/> <b>FBA2</b> - Flower Basket Arm Dual (See Note 2) <input type="checkbox"/> <b>BA1</b> - Banner Arms One Side (See Note 3) <input type="checkbox"/> <b>BA2</b> - Banner Arms Dual (See Note 3) <input type="checkbox"/> <b>AB</b> - Anchor Bolts <input type="checkbox"/> <b>BH</b> - Bullhorns <input type="checkbox"/> <b>N</b> - None
4" 20' (LD)				
4" 20' (MD)				
5" 20' (MD)				
6" 20' (MD)	<b>N</b> - None	<i>For Powder Coated, please select Colour from next column</i>	<b>BLK</b> - Black  <b>BZ</b> - Bronze  <b>BR</b> - Brushed  <b>CC</b> - Custom Colour (RAL- ) <i>(Additional charges may apply)</i>  <b>N</b> - None	<input type="checkbox"/> <b>DUPR</b> - 1110 Box Provision (Festoon Box) <input type="checkbox"/> <b>DUPR GFI</b> - 1110 Box Provision c/w 15A 120V GFI Receptacle and Weatherproof Cover  <input type="checkbox"/> <b>BCP</b> - Type 4 Plastic Base Cover <input type="checkbox"/> <b>BCCS</b> - Type 4 Cast Square Base Cover <input type="checkbox"/> <b>HHSS</b> - Hand Hole Security System <input type="checkbox"/> <b>FBA1</b> - Flower Basket Arm One Side (See Note 2) <input type="checkbox"/> <b>FBA2</b> - Flower Basket Arm Dual (See Note 2) <input type="checkbox"/> <b>BA1</b> - Banner Arms One Side (See Note 3) <input type="checkbox"/> <b>BA2</b> - Banner Arms Dual (See Note 3) <input type="checkbox"/> <b>AB</b> - Anchor Bolts <input type="checkbox"/> <b>BH</b> - Bullhorns <input type="checkbox"/> <b>N</b> - None
6" 20' (HD)				
5" 25' (MD)				
6" 25' (MD)				
6" 25' (HD)	<b>N</b> - None	<i>For Powder Coated, please select Colour from next column</i>	<b>BLK</b> - Black  <b>BZ</b> - Bronze  <b>BR</b> - Brushed  <b>CC</b> - Custom Colour (RAL- ) <i>(Additional charges may apply)</i>  <b>N</b> - None	<input type="checkbox"/> <b>DUPR</b> - 1110 Box Provision (Festoon Box) <input type="checkbox"/> <b>DUPR GFI</b> - 1110 Box Provision c/w 15A 120V GFI Receptacle and Weatherproof Cover  <input type="checkbox"/> <b>BCP</b> - Type 4 Plastic Base Cover <input type="checkbox"/> <b>BCCS</b> - Type 4 Cast Square Base Cover <input type="checkbox"/> <b>HHSS</b> - Hand Hole Security System <input type="checkbox"/> <b>FBA1</b> - Flower Basket Arm One Side (See Note 2) <input type="checkbox"/> <b>FBA2</b> - Flower Basket Arm Dual (See Note 2) <input type="checkbox"/> <b>BA1</b> - Banner Arms One Side (See Note 3) <input type="checkbox"/> <b>BA2</b> - Banner Arms Dual (See Note 3) <input type="checkbox"/> <b>AB</b> - Anchor Bolts <input type="checkbox"/> <b>BH</b> - Bullhorns <input type="checkbox"/> <b>N</b> - None
6" 25' (HD)				
6" 30' (HD)				
6" 32' (HD)				
6" 35' (HD)	<b>N</b> - None	<i>For Powder Coated, please select Colour from next column</i>	<b>BLK</b> - Black  <b>BZ</b> - Bronze  <b>BR</b> - Brushed  <b>CC</b> - Custom Colour (RAL- ) <i>(Additional charges may apply)</i>  <b>N</b> - None	<input type="checkbox"/> <b>DUPR</b> - 1110 Box Provision (Festoon Box) <input type="checkbox"/> <b>DUPR GFI</b> - 1110 Box Provision c/w 15A 120V GFI Receptacle and Weatherproof Cover  <input type="checkbox"/> <b>BCP</b> - Type 4 Plastic Base Cover <input type="checkbox"/> <b>BCCS</b> - Type 4 Cast Square Base Cover <input type="checkbox"/> <b>HHSS</b> - Hand Hole Security System <input type="checkbox"/> <b>FBA1</b> - Flower Basket Arm One Side (See Note 2) <input type="checkbox"/> <b>FBA2</b> - Flower Basket Arm Dual (See Note 2) <input type="checkbox"/> <b>BA1</b> - Banner Arms One Side (See Note 3) <input type="checkbox"/> <b>BA2</b> - Banner Arms Dual (See Note 3) <input type="checkbox"/> <b>AB</b> - Anchor Bolts <input type="checkbox"/> <b>BH</b> - Bullhorns <input type="checkbox"/> <b>N</b> - None
6" 30' (HD)				
6" 32' (HD)				
6" 35' (HD)				
<b>Pole Specs</b>	<b>Mounting</b>	<b>Finish Type</b>	<b>PC Colour</b>	<b>Options</b>
SSA				

Pole Type: LD = 0.125", MD = 0.188", HD = 0.250"

Sample Catalogue #: SSA520MD-ST1-PC-BLK-HHSS-BA1

Note 1: Please provide fixture cutsheet.

Note 2: Please provide basket weight, arm length and mounting height.

Note 3: Please provide banner size and mounting height.

Reset Order Entry Form